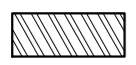
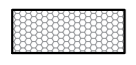
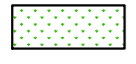

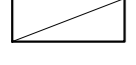
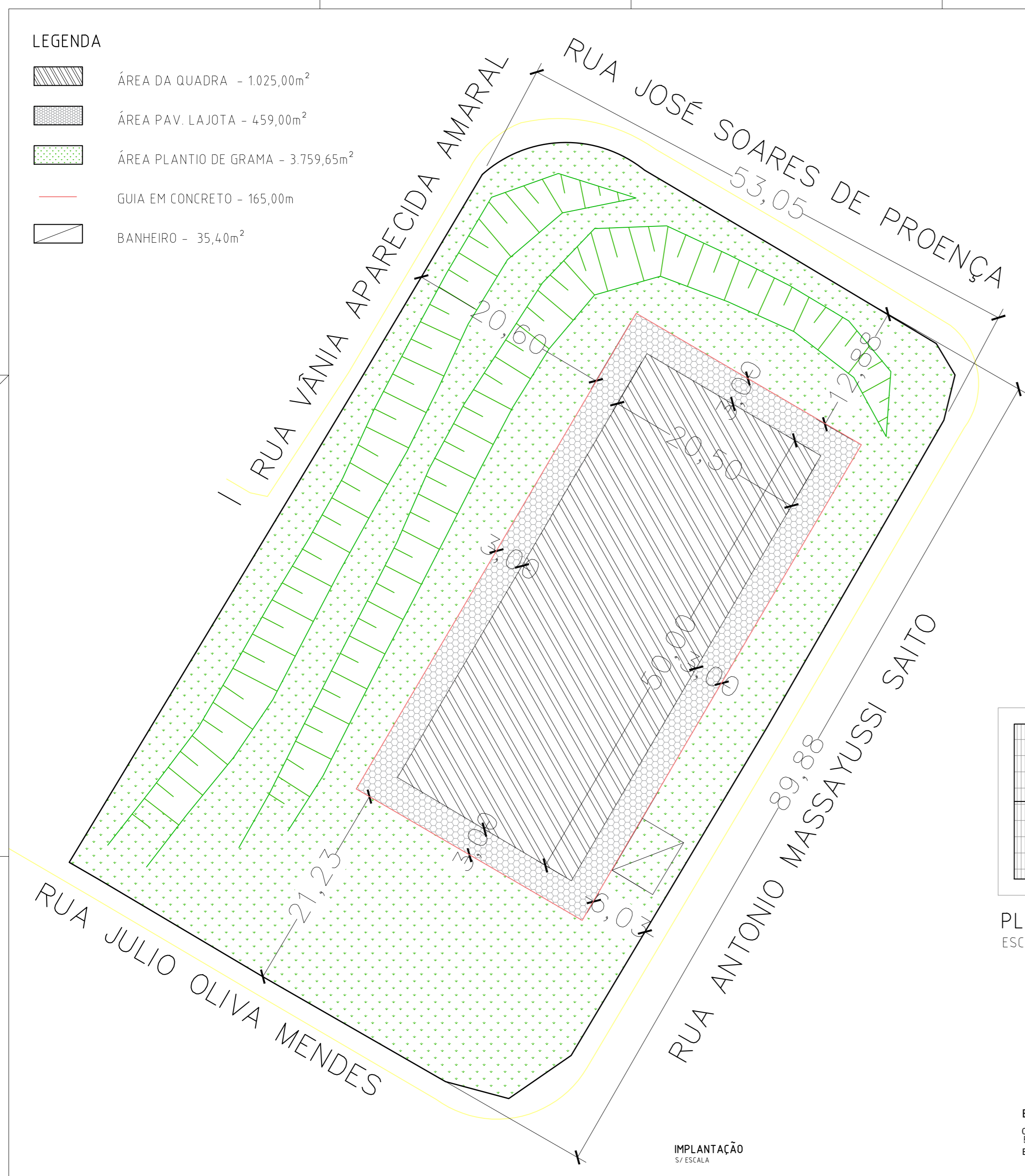
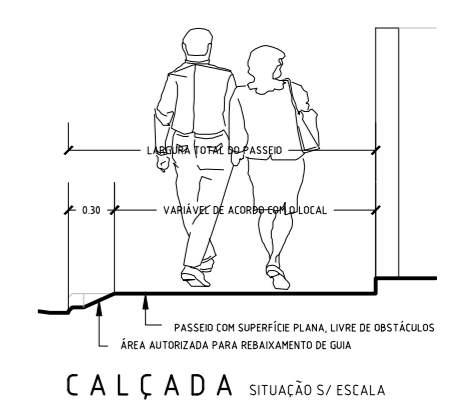
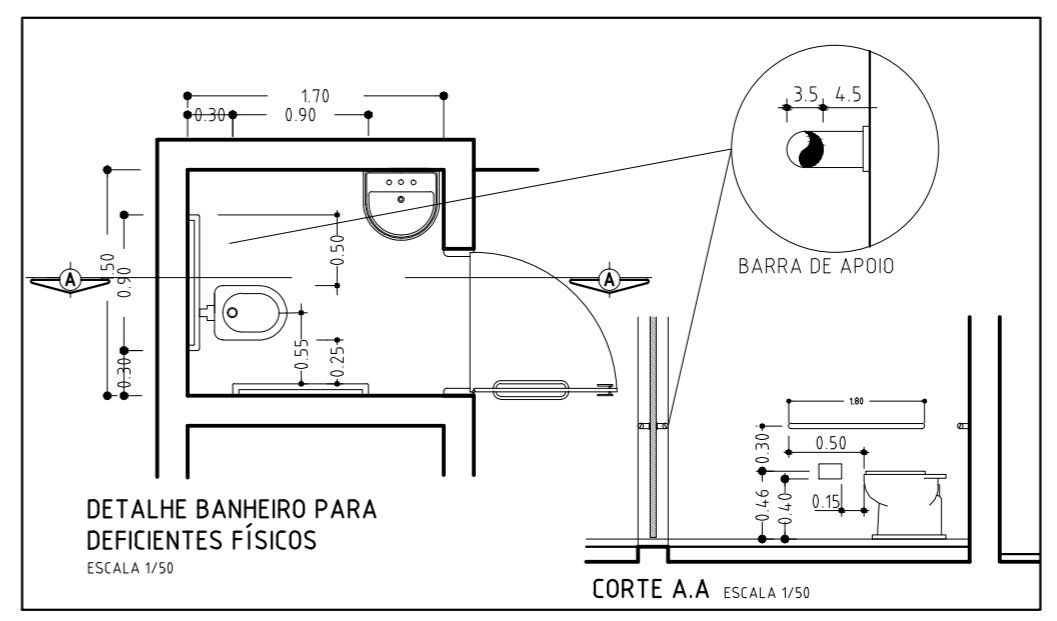


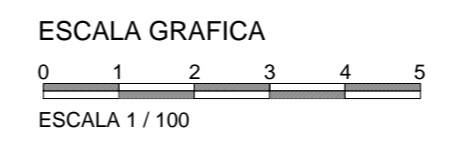
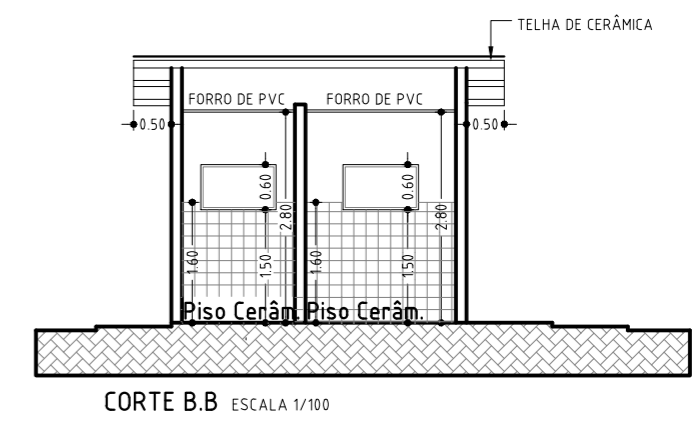
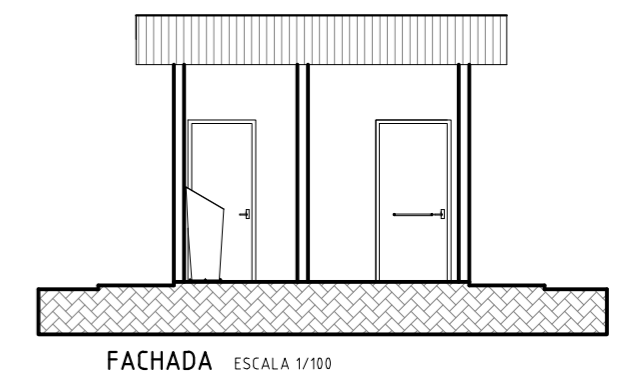
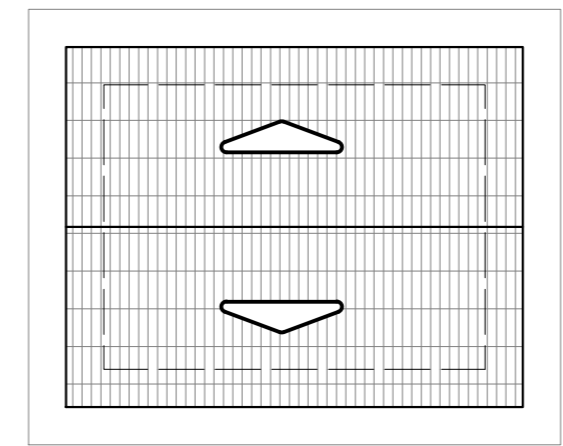
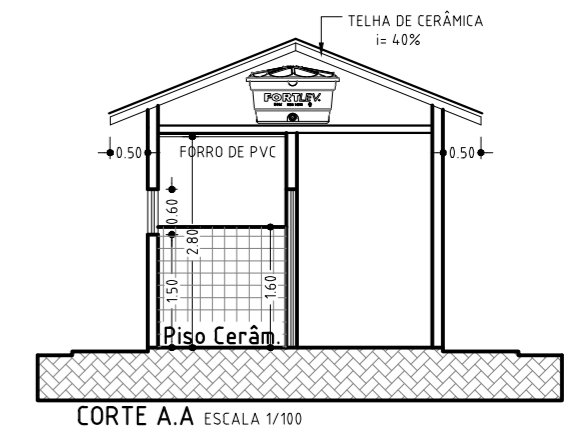
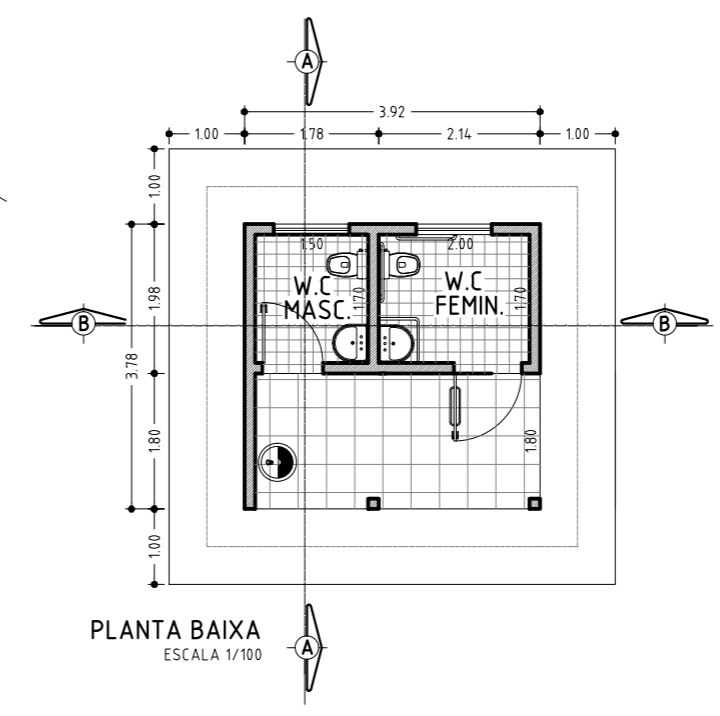
- LEGENDA**
-  ÁREA DA QUADRA - 1.025,00m²
 -  ÁREA PAV. LAJOTA - 459,00m²
 -  ÁREA PLANTIO DE GRAMA - 3.759,65m²
 -  GUIA EM CONCRETO - 165,00m
 -  BANHEIRO - 35,40m²



IMPLANTAÇÃO
S/ ESCALA




A INSTALAÇÃO E CONSERVAÇÃO DOS RESERVATÓRIOS DE ÁGUA, ATENDERÃO AO DISPOSTO NOS ARTIGOS 10 E 11 DO DECRETO Nº 12.342/78.



O B S E R V A C O E S

A P R O V A Ç Ã O

ATUALIZAÇÃO	A P R O V A Ç Ã O				
	Nº	DATA	FEITO	VERIF.	APROVADO




SECRETARIA MUNICIPAL DE PLANEJAMENTO
OBRA: Calçamento do acesso a Vila Santa Isabel

DEPARTAMENTO DE ENGENHARIA E PROJETOS

Dr. JULIO F. GALVÃO DIAS
PREFEITO MUNICIPAL

ARQ. EDUARDO CANEPA
CAU. A5134-9



SECRETARIA MUNICIPAL DE PLANEJAMENTO

DEALHES CONSTRUTIVOS
E S C A L A I N D I C A D A