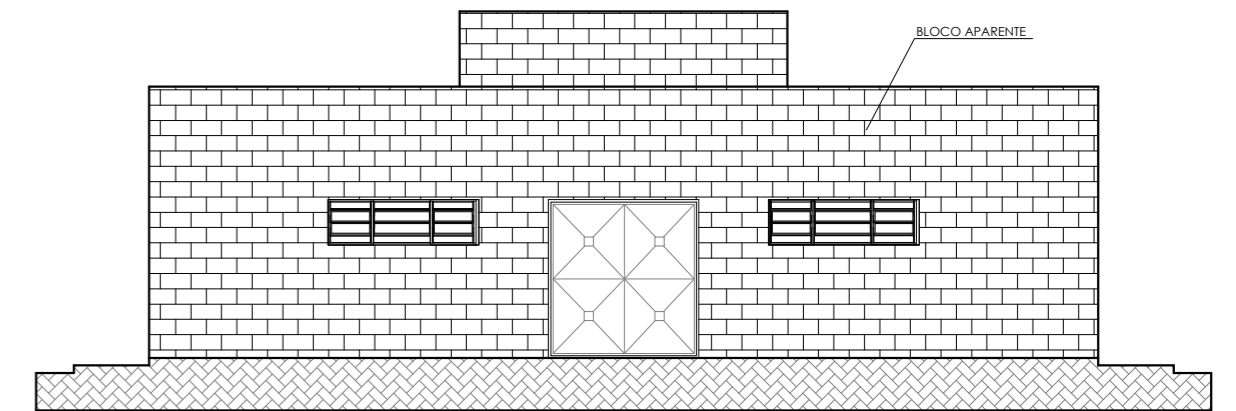
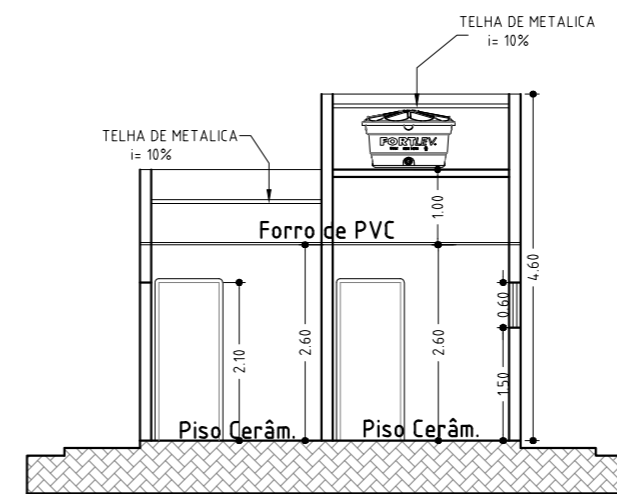


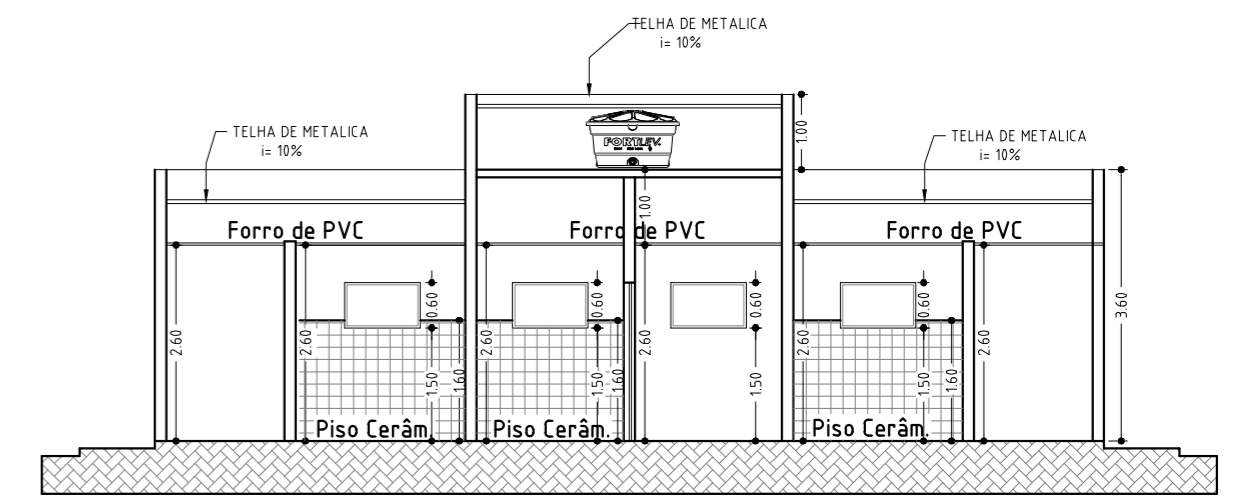
PLANTA DE COBERTURA
ESCALA 1/200



FACHADA ESCALA 1/100



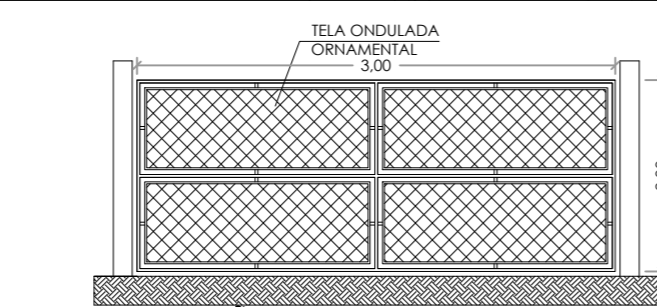
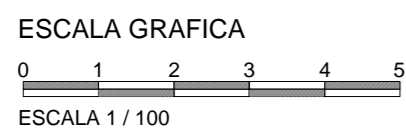
CORTE B.B ESCALA 1/100



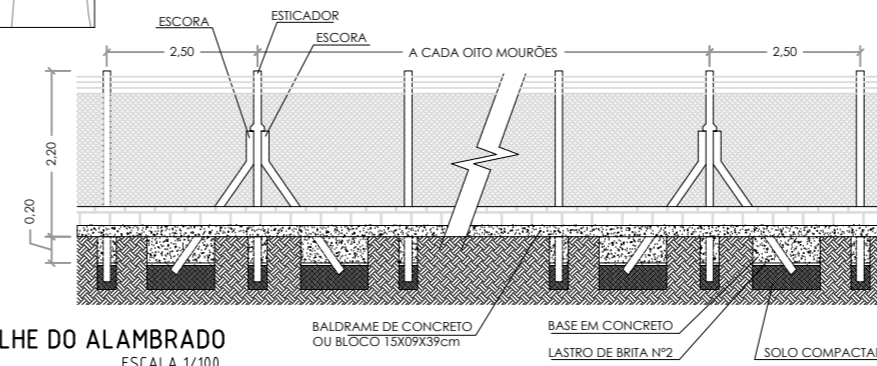
CORTE A.A ESCALA 1/100

QUADRO ÁREAS

ALAMBRADO = 343m
CAMPO = 5.400m²
VESTIARIO = 63,40m²



DETALHE DO PORTÃO
ESCALA 1/50



DETALHE DO ALAMBRADO
ESCALA 1/100

O B S E R V A C O E S

ATUALIZAÇÃO	APROVAÇÃO				
	Nº	DATA	FEITO	VERIF.	APROVADO



DEPARTAMENTO DE ENGENHARIA E PROJETOS

Dr. JULIO F. GALVÃO DIAS
PREFEITO MUNICIPAL

Eng. Civ.: GABRIEL D. RIBEIRO MACHADO
CREA: 50706354/4

SPPMCB
SECRETARIA MUNICIPAL DE PLANEJAMENTO
OBRA: CAMPO DE FUTEBOL - VILA APARECIDA

DEALHES CONSTRUTIVOS
ESCALA INDICADA